

S.W. 1/4
SECTION 8, T.6N., R.1W., S.L.B. & M.

IN OGDEN CITY & TOWN OF HARRISVILLE

TAXING UNIT: 20, 25

SCALE 1" = 200'

ALSO SEE PAGES 42-1, 2, 3,

SEE P. 33-2

SEE PAGE 33

HART SUB. NO. 1
SEE P. 216 &
HART SU;B NO. 1 LOT 3 1ST AMD
SEE P. 378

TAYLOR RANCHETTES SUB.
SEE PAGE 246

CROPSY 3RD.
ADDITION
SEE

RADIUS ST.

P.

39

EUCLID ST.

HARRISVILLE

S 83°31'26" E 537.09'

S 87°48'38" E
44.49'

S 82°38'40" E 342.70'

S 80°03'37" E
198.21'

165.08'

N 0°35' E
27.53'

430.57'

N 24°20'32" E

N 85°51'14" W 731.97'

CORP PR BP CH JC LDS
110420038
20.983 AC±
TU:20

CORP PR BP CH JC LDS

110420037

10.91 AC±
TU 20

S 89°50'07" E 592.86'

592.86'

SEE P.
42-3

L=48.35'
R=221.00'
25.03'

S 00°58' W 779.52'

N 0°58'00" E

799.71'

805.34'

OGDEN CITY
(110420034)
8,956 SQ FT

UDOT
(110420036)
332 SQ FT

R.O.W. E#2393485

HARRISVILLE TOWN LIMITS
NORTH VIEW FIRE DIST

OGDEN CITY LIMITS

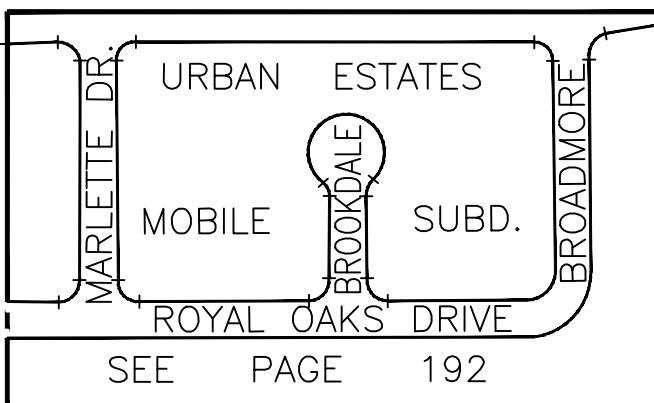
N 89°09'46" W 475.71'

SEE PAGE 36

NORTH

STREET

SEE P. 25



SEE P. 42-2

SEE P. 42-1

SEE

P. 43

WALL

DAN STREET

PARKWOOD ESTATES
NO. 1

PINGREE STREET

SEE PAGES 155 & 156